

Item description/product images



Description

Material:

Stainless steel 1.4305.

Version:

Bright.

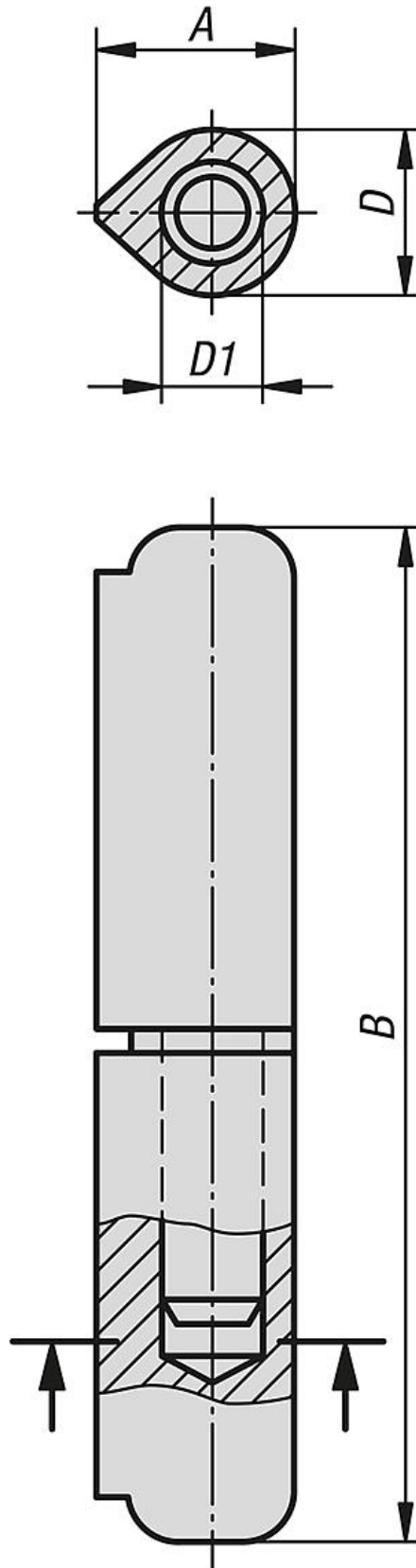
Note:

The hinges are made of weldable profile steel.

The pin is fixed into the lower part of the hinge.

The differing steel qualities of the weld and the beam onto which the hinge is welded must be at least equal to or better than:

Stainless steel 1.4301.



Overview of items

| Order No. | A | B | D | D1 |
|-----------------|------|-----|----|----|
| 27886-010060033 | 12 | 60 | 10 | 6 |
| 27886-013080033 | 15,5 | 80 | 13 | 8 |
| 27886-016100033 | 20 | 100 | 16 | 10 |
| 27886-016120033 | 20 | 120 | 16 | 11 |
| 27886-020150033 | 25,5 | 150 | 20 | 13 |
| 27886-020180033 | 25,5 | 180 | 20 | 14 |