

## Item description/product images



## Description

## Material:

Centring flange QT steel 1.1191 or 1.1192.

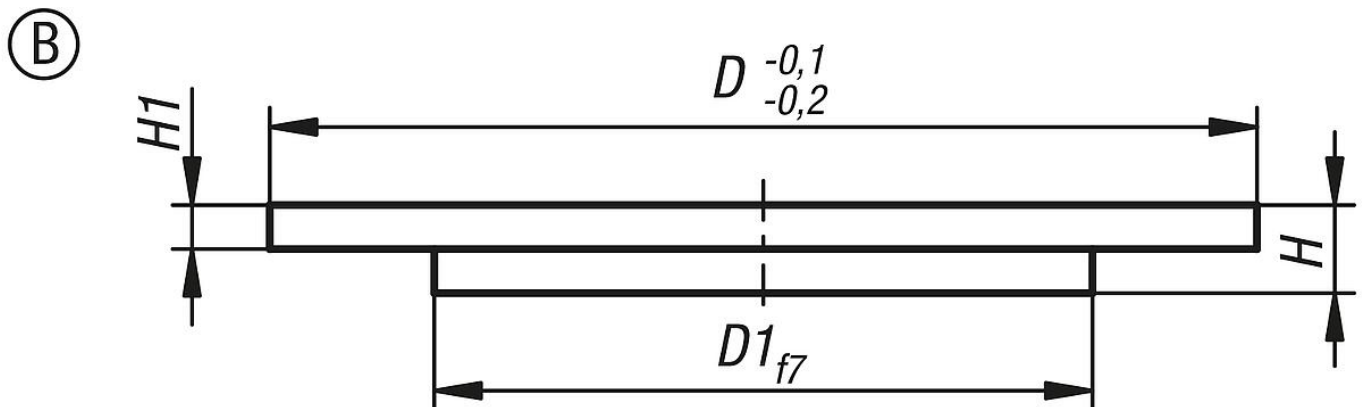
## Note:

The centring flange with bore is a high-quality component that can be used in tool and die making. This centring flange has a precise shoulder that facilitates easy alignment and positioning of tools or dies. The conical bore of the flange provides excellent guidance and ensures a secure connection between different parts.

The centring flange with shoulder is an outstanding choice for tool and die making applications that require precise alignment. This flange has a shoulder that facilitates the alignment of parts and ensures stable positioning.

The centring flange with shoulder and screw holes can be used in tool and die making where precise alignment, secure fastening and reliable positioning are essential. Its combination of precise functions and screw holes makes it highly versatile in various manufacturing applications.

## Drawings



## Overview of items

Order No.	Form	Form definition	Steel code	D	D1	H	H1
03152-30-106008	B	with seating	1.1191	90	60	8	4
03152-30-106011	B	with seating	1.1191	90	60	11	4
03152-30-106013	B	with seating	1.1191	90	60	13	4
03152-30-106014	B	with seating	1.1191	90	60	14	4
03152-30-108012	B	with seating	1.1191	90	80	12	8
03152-30-108015	B	with seating	1.1191	90	80	15	8
03152-30-108017	B	with seating	1.1191	90	80	17	8
03152-30-110012	B	with seating	1.1191	100	90	12	8
03152-30-110015	B	with seating	1.1191	100	90	15	8
03152-30-110017	B	with seating	1.1191	100	90	17	8
03152-30-110018	B	with seating	1.1191	100	90	18	8
03152-30-110019	B	with seating	1.1191	100	90	19	8
03152-30-110021	B	with seating	1.1191	100	90	21	8,5
03152-30-111012	B	with seating	1.1191	110	90	12	8
03152-30-111015	B	with seating	1.1191	110	90	15	8
03152-30-111017	B	with seating	1.1191	110	90	17	8
03152-30-111018	B	with seating	1.1191	110	90	18	8
03152-30-111019	B	with seating	1.1191	110	90	19	8
03152-30-111020	B	with seating	1.1191	110	90	20	8

## Overview of items

Order No.	Form	Form definition	Steel code	D	D1	H	H1
03152-30-111021	B	with seating	1.1191	110	90	21	8,5
03152-30-112012	B	with seating	1.1191	120	90	12	8
03152-30-112015	B	with seating	1.1191	120	90	15	8
03152-30-112017	B	with seating	1.1191	120	90	17	8
03152-30-112018	B	with seating	1.1191	120	90	18	8
03152-30-112019	B	with seating	1.1191	120	90	19	8
03152-30-112020	B	with seating	1.1191	120	90	20	8
03152-30-112021	B	with seating	1.1191	120	90	21	8,5
03152-30-112512	B	with seating	1.1191	125	90	12	8
03152-30-112515	B	with seating	1.1191	125	90	15	8
03152-30-112517	B	with seating	1.1191	125	90	17	8
03152-30-112518	B	with seating	1.1191	125	90	18	8
03152-30-112519	B	with seating	1.1191	125	90	19	8
03152-30-112520	B	with seating	1.1191	125	90	20	8
03152-30-112521	B	with seating	1.1191	125	90	21	8,5
03152-30-114012	B	with seating	1.1191	140	90	12	8
03152-30-115012	B	with seating	1.1191	150	90	12	8
03152-30-116012	B	with seating	1.1191	160	90	12	8
03152-30-116015	B	with seating	1.1191	160	90	15	8
03152-30-116017	B	with seating	1.1191	160	90	17	8
03152-30-116018	B	with seating	1.1191	160	90	18	8
03152-30-116019	B	with seating	1.1191	160	90	19	8
03152-30-116020	B	with seating	1.1191	160	90	20	8
03152-30-116021	B	with seating	1.1191	160	90	21	8,5
03152-30-117512	B	with seating	1.1191	175	90	12	8
03152-30-117515	B	with seating	1.1191	175	90	15	8
03152-30-117517	B	with seating	1.1191	175	90	17	8
03152-30-117518	B	with seating	1.1191	175	90	18	8
03152-30-117519	B	with seating	1.1191	175	90	19	8
03152-30-117520	B	with seating	1.1191	175	90	20	8
03152-30-117521	B	with seating	1.1191	175	90	21	8,5
03152-30-120012	B	with seating	1.1191	200	90	12	8
03152-30-125012	B	with seating	1.1191	250	90	12	8