

Item description/product images



Description

Material:

Housing, steel.
Magnetic core AlNiCo.

Version:

Electro zinc-plated.

Note:

Shielded system. Diameter "D" without fitting tolerance. Fastening possibilities are press-in, shrink-fitting or gluing.
Deep pot magnets can be shortened by the dimension "H1" with no loss of magnetic force.

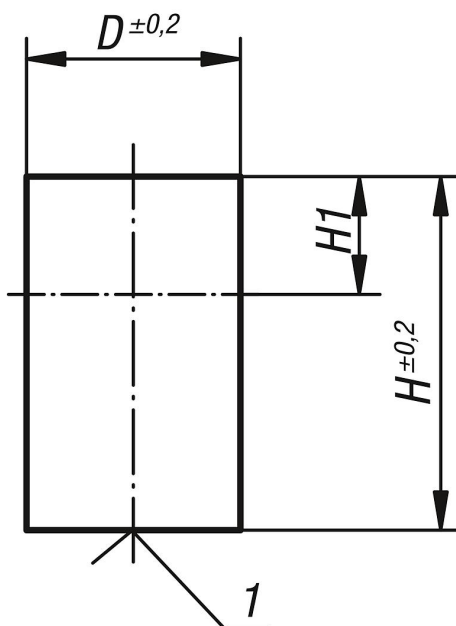
Temperature range:

max. 450°C.

Drawing reference:

1) magnetic face

Drawings



Overview of items

Order No.	D	H	H1	Magnetic force N
09061-01	6	20	12	1,5
09061-02	8	20	11	3,5
09061-03	10	20	10	7
09061-04	13	20	9	10
09061-05	16	20	5	18
09061-06	20	25	6	42
09061-07	25	35	10	96

Overview of items

Order No.	D	H	H1	Magnetic force N
09061-08	32	40	8	180
09061-09	40	50	10	240