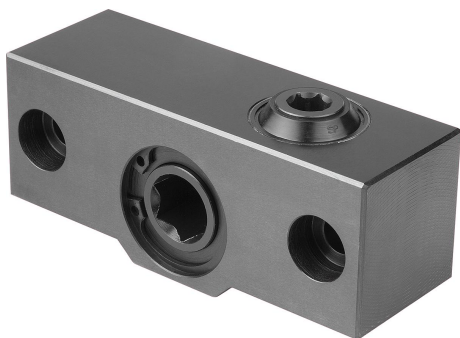


Item description/product images



Description

Material:

Housing steel.
Drive, steel.

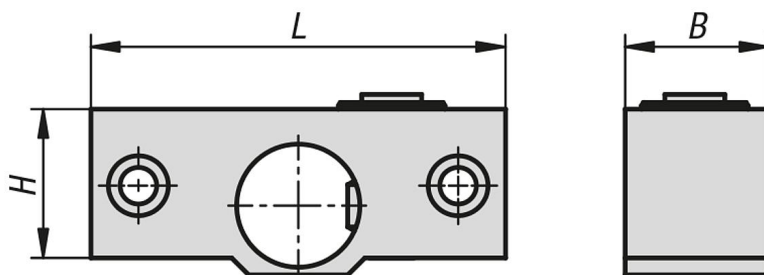
Note:

The angle drive is used to operate the NC vice from above or in tight spaces.

- The ratio is 1:1.4
- NC vice without angle drive max. 4.5 turns. With angle drive max. 6.3 turns.
- The angle drive is especially useful for horizontal use of NC vices, e.g. in the case of clamping cubes or workholding towers. The angle drive can also be used to operate the NC vice from above or in tight spaces.

Suitable for 41091-125470

Drawings



Overview of items

Order No.	B	H	L
41091-10-125	43	45	124,5