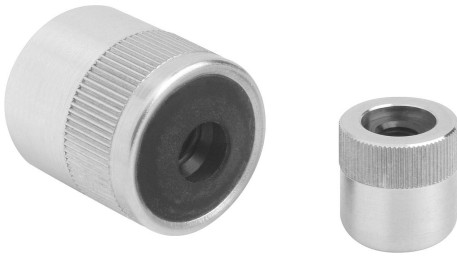


## Item description/product images



## Description

**Material:**

Sleeve aluminium.  
Receiving washer steel.  
Spring steel.

**Version:**

Sleeve blue electro zinc-plated.  
Washer, hardened and burnished.

**Note:**

The thrust pin can be made to suit the required circumstances and screwed into the tapped hole in the locating washer.  
The required lateral thrust ( $F$ ) can be achieved through the stroke ( $S$ ) and length ( $L1$ ).  
Form B has a seal to keep swarf and dirt out.

**Drawing reference:**

Form A: without seal  
Form B: with seal

## Drawings

