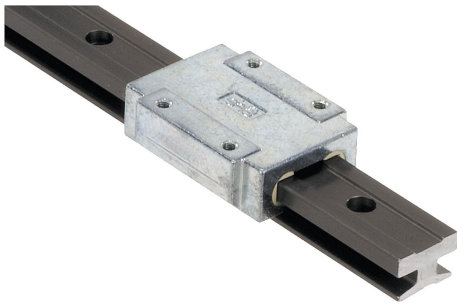


## Item description/product images



## Description

**Material:**

Slide carriage body die-cast zinc.

Slide elements maintenance-free iglidur® J.

Guide rail extruded profile EN AW-6060.

**Version:**

Hard anodised aluminium, 50 µm. Hardness 500 HV.

**Note:**

Due to their ability to run dry and their resistance to corrosion, miniature linear guides are completely maintenance-free. The slider components in iglidur® J are wear-resistant and replaceable. Can be use in a temperature range up to max. 80 °C.

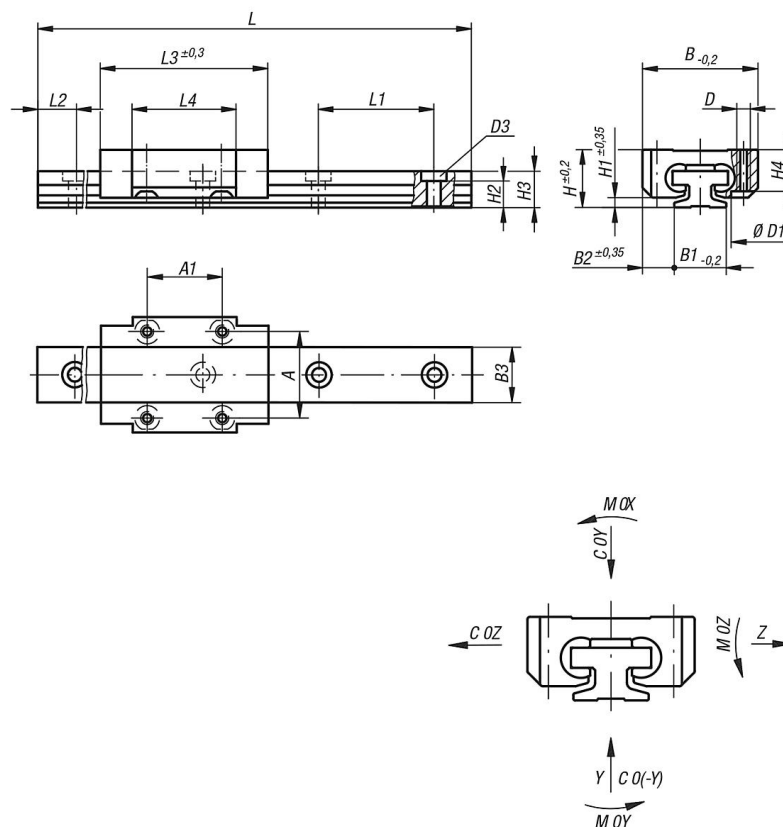
The small dimensions are a major advantage of these miniature linear guides.

\*\* lengths L2 = 12 mm

\* and L = 500 mm included

L2 and L only available as full mm.

## Drawings



## Overview of items

## Carriages

Overview of items

Order No.	Item	Version 2	Size	A	A1	B	B2	D	D1	H	H1	H4	L3	L4	COY N	CO(-Y) N	COZ N	MOX Nm	MOY Nm	MOZ Nm
21210-0900	Guide Carriage	standard fixed bearing	9	15	13	20	5,5	M2	4,4	10	1,7	7,2	29	18	480	480	240	3,4	1,8	1,8
21210-1200	Guide Carriage	standard fixed bearing	12	20	15	27	7,5	M3	6,5	13	2,2	9,5	34	22	960	960	480	9,2	4,4	4,4
21210-1500	Guide Carriage	standard fixed bearing	15	25	20	32	8,5	M3	6,5	16	2,8	11	42	31	1400	1400	700	17	8	8
21210-0920	Guide Carriage	floating bearing y axis	9	15	13	20	5,5	M2	4,4	10	1,7	7,2	29	18	480	480	240	3,4	1,8	1,8
21210-1220	Guide Carriage	floating bearing y axis	12	20	15	27	7,5	M3	6,5	13	2,2	9,5	34	22	960	960	480	9,2	4,4	4,4
21210-1520	Guide Carriage	floating bearing y axis	15	25	20	32	8,5	M3	6,5	16	2,8	11	42	31	1400	1400	700	17	8	8
21210-0930	Guide Carriage	floating bearing z axis	9	15	13	20	5,5	M2	4,4	10	1,7	7,2	29	18	480	480	240	3,4	1,8	1,8
21210-1230	Guide Carriage	floating bearing z axis	12	20	15	27	7,5	M3	6,5	13	2,2	9,5	34	22	960	960	480	9,2	4,4	4,4
21210-1530	Guide Carriage	floating bearing z axis	15	25	20	32	8,5	M3	6,5	16	2,8	11	42	31	1400	1400	700	17	8	8

Guide rails

Order No.	Item	Size	L max.	L2	B1	B3	D3 for screw to DIN 912	H2	H3	L1
21210-0910X0800	Guide Rail	9	800	10	9	9,6	M2	4,6	6,3	20
21210-1212X0800	Guide Rail	12	800	12	12	13	M3	5,9	8,6	25
21210-1520X3000	Guide Rail	15	3000	20	15	17	M3	7	10,8	40

Order No.	Item	Version 1	Size	L max.	L	L2	L2 min.	L2 max.	B1	B3	D3 for screw to DIN 912	H2	H3	L1
21210-09**X*	Guide Rail	L2 and L customer specific	9	800	*	**	5	14,5	6	9,6	M2	4,6	6,3	20
21210-12**X*	Guide Rail	L2 and L customer specific	12	800	*	**	5	17	12	13	M3	5,9	8,6	25
21210-15**X*	Guide Rail	L2 and L customer specific	15	3000	*	**	10	29,5	15	17	M3	7	10,8	40