

Item description/product images



Description

Material:

Housing high-strength aluminium.
Stop system steel.

Version:

Housing anodised.
Stop system hardened and black oxidised.

Note:

Maintenance-free pneumatic lifting units, compact construction with cross roller guides. Control by 4/2 or 5/2 directional valve. Pneumatic drive, 4-8 bar, constant, filtered (10 µm), dried, oiled or unoled. Compressed air connection M5. Modules of the same size can be combined with one another without adapter plates via the precise centring system by means of centring rings 20240.

Repeat accuracy ± 0.01 mm.

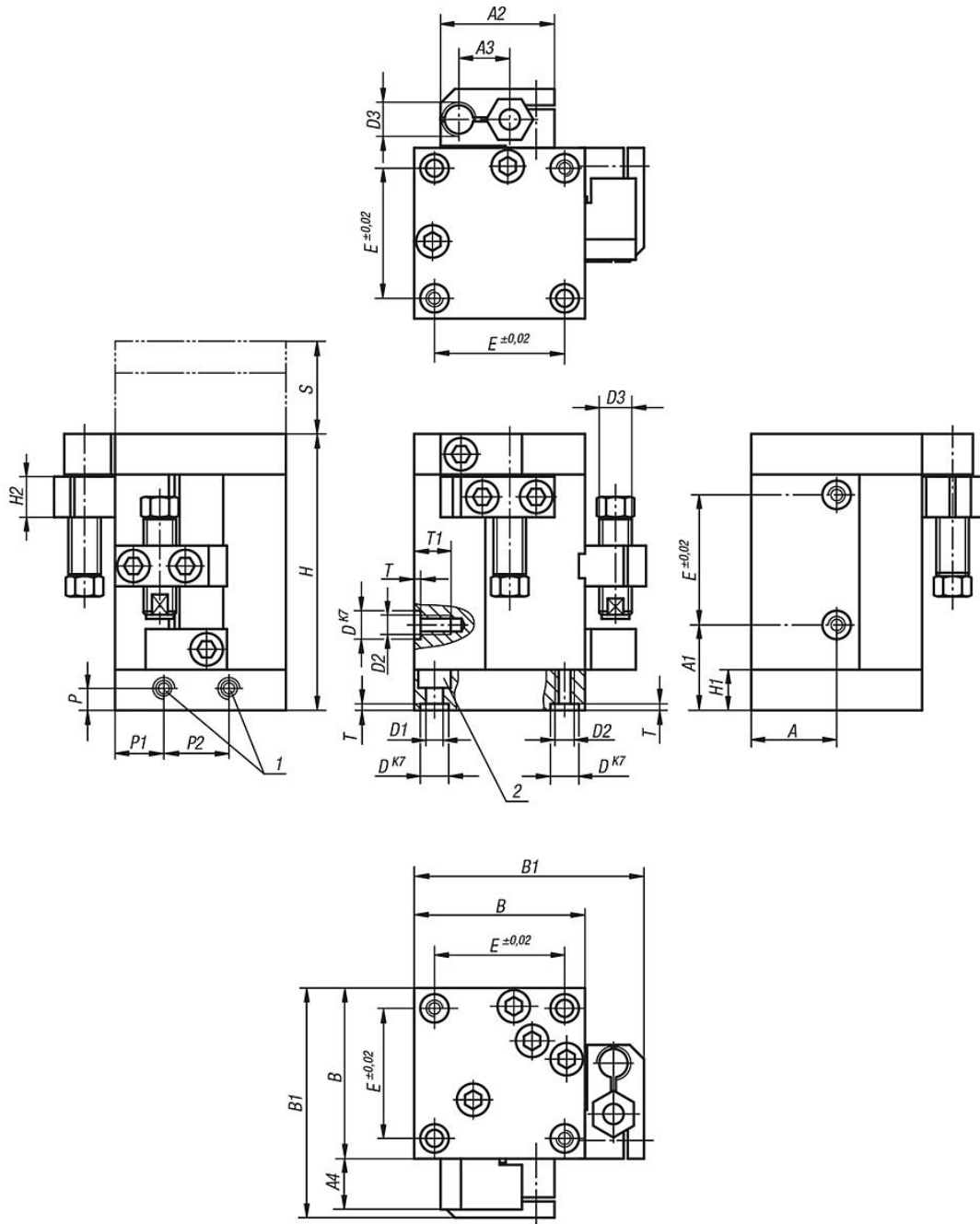
Accessory:

See table for shock absorbers, proximity switches and plug connectors.

Drawing reference:

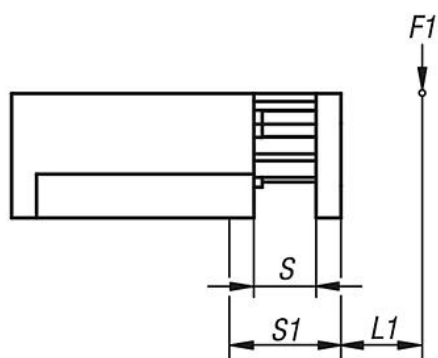
- 1) compressed air connections
- 2) counterbore for socket head screw ISO 4762-M4



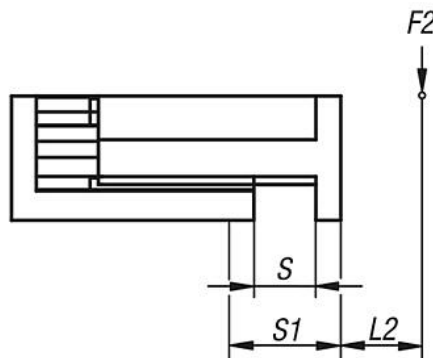


Drawings

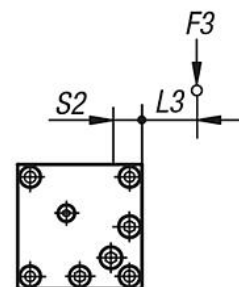
Load data



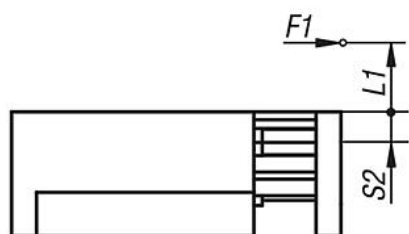
$$M1 = (S1 + L1) \times F1$$



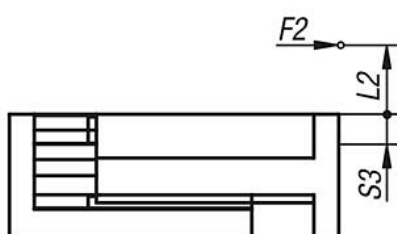
$$M2 = (S1 + L2) \times F2$$



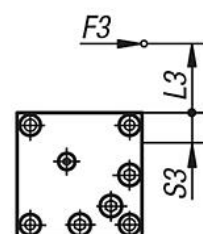
$$M3 = (S2 + L3) \times F3$$



$$M1 = (S2 + L1) \times F1$$



$$M2 = (S3 + L2) \times F2$$



$$M3 = (S3 + L3) \times F3$$

$$\frac{M1_{eff}}{M1_{zul}} + \frac{M2_{eff}}{M2_{zul}} + \frac{M3_{eff}}{M3_{zul}} \leq 1$$

Calculation of lifespan:

$$L = \left(\frac{M_{zul}}{M_{eff}} \right)^3 \times 10^5$$

L = lifespan (m)

M_{zul} = permissible torque (Nm)

M_{eff} = calculated torque (Nm)

Overview of items

| Order No. | Size | A | A1 | A2 | A3 | A4 | B | B1 | D | D1 | D2 | D3 | E | H | H1 | H2 | P | P1 | P2 | Travel S | T | T1 |
|------------|------|----|----|------|------|------|----|----|----|-----|----|-------|----|-----|----|----|---|----|----|----------|-----|----|
| 20050-4010 | 4 | 21 | 21 | 27,5 | 12 | 12,5 | 42 | 57 | 7 | 4,2 | M4 | M8x1 | 32 | 68 | 10 | 10 | 5 | 12 | 16 | 10 | 1,6 | 6 |
| 20050-4025 | 4 | 21 | 39 | 27,5 | 12 | 12,5 | 42 | 57 | 7 | 4,2 | M4 | M8x1 | 32 | 86 | 10 | 10 | 5 | 12 | 16 | 25 | 1,6 | 6 |
| 20050-6025 | 6 | 30 | 38 | 38 | 17,5 | 14 | 60 | 78 | 10 | 6,4 | M6 | M14x1 | 48 | 104 | 12 | 12 | 6 | 16 | 18 | 25 | 2,1 | 9 |
| 20050-6050 | 6 | 30 | 63 | 38 | 17,5 | 14 | 60 | 78 | 10 | 6,4 | M6 | M14x1 | 48 | 129 | 12 | 12 | 6 | 16 | 18 | 50 | 2,1 | 9 |

Overview of items

| Order No. | Size | Piston force at 6 bar (N) | Retraction force at 6 bars (N) | Cylinder \emptyset | Air consumption per cycle at 6 bar (ccm) | Suitable shock absorber | Suitable proximity switch | Suitable plug connector |
|------------|------|---------------------------|--------------------------------|----------------------|--|-------------------------|---------------------------|-------------------------|
| 20050-4010 | 4 | 80 | 55 | 16 | 3,7 | 26300-0810008 | 83000-020X5000 | - |
| 20050-4025 | 4 | 80 | 55 | 16 | 9,3 | 26300-0810008 | 83000-020X5000 | - |
| 20050-6025 | 6 | 185 | 175 | 25 | 23,8 | 26310-1410012 | 83000-15-020 | 80150-010X2000 |
| 20050-6050 | 6 | 185 | 175 | 25 | 47,7 | 26310-1410012 | 83000-15-020 | 80150-010X2000 |

| Order No. | Size | M1 Nm | M2 Nm | M3 Nm | S1 | S2 | S3 | Dynamic load rating N | Static load rating N |
|------------|------|-------|-------|-------|-------------------|----|------|-----------------------|----------------------|
| 20050-4010 | 4 | 12,5 | 12,5 | 13,5 | 19 + S/2 (travel) | 10 | 16,5 | 1435 | 1435 |
| 20050-4025 | 4 | 15 | 15 | 18 | 26 + S/2 (travel) | 10 | 16,5 | 1640 | 1640 |
| 20050-6025 | 6 | 33 | 33 | 56 | 33 + S/2 (travel) | 11 | 17 | 2600 | 2600 |
| 20050-6050 | 6 | 33 | 33 | 56 | 45 + S/2 (travel) | 11 | 17 | 2600 | 2600 |