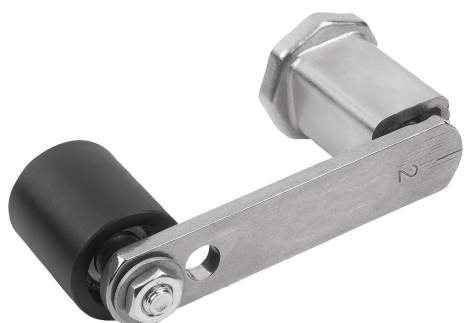
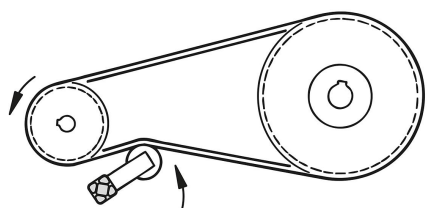


## Item description/product images

**Description****Material:**

Pulley plastic PA6.  
Ball bearing chrome steel.  
Screw and nut steel.

**Version:**

Ball bearing with sealing discs 2Z-C3.  
Screw ISO 4017, grade 8.8, electro zinc-plated.  
Nut ISO 4035, grade 8, electro zinc-plated.

**Note:**

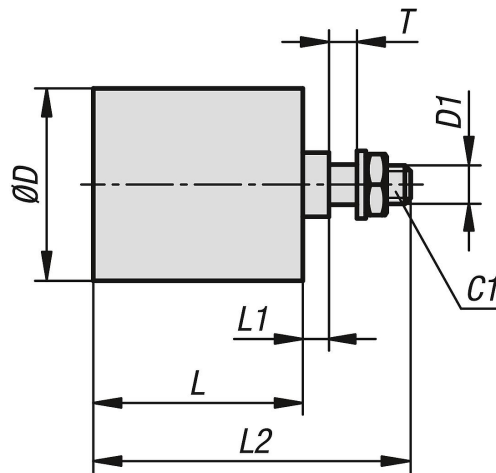
Ready-to-install tension pulleys for belts, complete with ball bearing. The ball bearings are sealed both sides, permanently lubricated and maintenance-free.

For tensioning belts on the back of the belt. The tension pulleys can be combined with all tensioning elements to form an elastic belt tensioner. Rigid mounting without a tensioning element is also possible. Can also be used as an idler pulley.

**Temperature range:**

-40 °C to +100 °C.

## Drawings



## Overview of items

Order No.	D	D1	L	L1	L2	T max.	belt width max.	Tightening torque of screw C1 Nm	max. rpm	Suitable for clamping element size
22102-30035	30	M8	35	3	51	7	30	10	8000	1
22102-40045	40	M10	45	6	67	9	40	20	8000	2+3
22102-60060	60	M12	60	7,5	89	13	55	35	6000	4
22102-80090	80	M20	90	9	127	14	85	160	5000	5