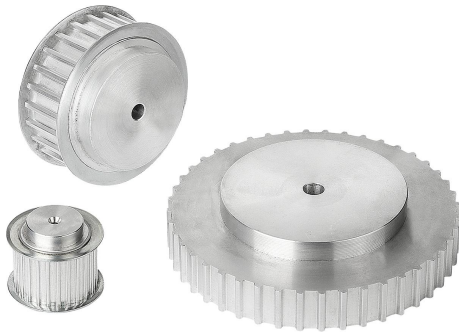


Item description/product images



Description

Material:

Aluminium.
Rim flanges, steel.

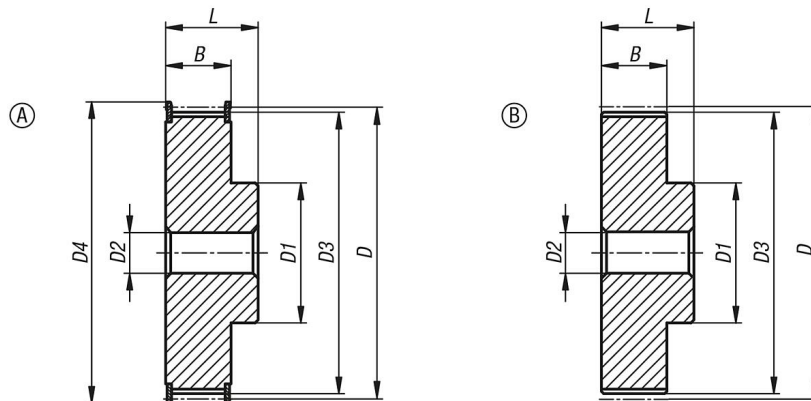
Version:

Aluminium bright.
Steel electro zinc-plated.

Note:

Standard AT-profile with metric pitch (trapezoidal toothing). At least one toothed belt pulley must have a rim flange. The toothed belt pulleys have a centre bore or are pre-drilled (this can vary due to production methods). For this reason, the dimension D2 max. given in the table is the maximum diameter of the bore that the toothed belt pulleys are supplied with. This pilot hole/centre bore can be customised with a reamed hole, reamed hole with keyway or a tapped hole by the customer. Alternatively, bushes can be fitted by the customer to reduce the diameter. To reduce weight, the toothed belt pulleys may have a recess on one face.

Drawings



Overview of items

Order No.	Profile	belt width	Form	No. of teeth	D	D1	D2 max.	D3	D4	B	L
22003-051012	AT5	10	A	12	19,01	10	6	17,85	23	15	21
22003-051014	AT5	10	A	14	22,29	13	8	21,05	25	15	21
22003-051015	AT5	10	A	15	23,88	16	10	22,65	28	15	21
22003-051016	AT5	10	A	16	25,47	18	11	24,2	32	15	21
22003-051018	AT5	10	A	18	28,65	20	12	27,4	32	15	21
22003-051019	AT5	10	A	19	30,25	22	12	29	36	15	21
22003-051020	AT5	10	A	20	31,83	23	14	30,6	36	15	21
22003-051022	AT5	10	A	22	35,12	24	15	33,85	38	15	21
22003-051024	AT5	10	A	24	38,21	26	15	37	42	15	21
22003-051025	AT5	10	A	25	39,8	26	15	38,6	44	15	21
22003-051026	AT5	10	A	26	41,47	26	16	40,2	44	15	21
22003-051027	AT5	10	A	27	42,98	30	18	41,8	48	15	21
22003-051028	AT5	10	A	28	44,62	32	18	43,35	48	15	21
22003-051030	AT5	10	A	30	47,76	34	18	46,55	51	15	21
22003-051032	AT5	10	A	32	50,94	36	22	49,7	54	15	21
22003-051036	AT5	10	A	36	57,31	38	22	56,05	63	15	21
22003-051040	AT5	10	A	40	63,66	40	23	62,45	66	15	21
22003-051042	AT5	10	A	42	66,87	40	24	65,6	71	15	21
22003-051044	AT5	10	B	44	70,07	45	26	68,8	-	15	21

Overview of items

Order No.	Profile	belt width	Form	No. of teeth	D	D1	D2 max.	D3	D4	B	L
22003-051048	AT5	10	B	48	76,42	50	28	75,15	-	15	21
22003-051060	AT5	10	B	60	95,52	65	35	94,25	-	15	21
22003-051612	AT5	16	A	12	19,01	10	6	17,85	23	21	27
22003-051614	AT5	16	A	14	22,29	13	8	21,05	25	21	27
22003-051615	AT5	16	A	15	23,88	16	10	22,65	28	21	27
22003-051616	AT5	16	A	16	25,47	18	11	24,2	32	21	27
22003-051618	AT5	16	A	18	28,65	20	12	27,4	32	21	27
22003-051619	AT5	16	A	19	30,25	22	12	29	36	21	27
22003-051620	AT5	16	A	20	31,83	23	14	30,6	36	21	27
22003-051622	AT5	16	A	22	35,12	24	15	33,85	38	21	27
22003-051624	AT5	16	A	24	38,21	26	15	37	42	21	27
22003-051625	AT5	16	A	25	39,8	26	15	38,6	44	21	27
22003-051626	AT5	16	A	26	41,47	26	16	40,2	44	21	27
22003-051627	AT5	16	A	27	42,98	30	18	41,8	48	21	27
22003-051628	AT5	16	A	28	44,62	32	18	43,35	48	21	27
22003-051630	AT5	16	A	30	47,76	34	18	46,55	51	21	27
22003-051632	AT5	16	A	32	50,94	36	22	49,7	54	21	27
22003-051636	AT5	16	A	36	57,31	38	22	56,05	63	21	27
22003-051640	AT5	16	A	40	63,66	40	23	62,45	66	21	27
22003-051642	AT5	16	A	42	66,87	40	24	65,6	71	21	27
22003-051644	AT5	16	B	44	70,07	45	26	68,8	-	21	27
22003-051648	AT5	16	B	48	76,42	50	28	75,15	-	21	27
22003-051660	AT5	16	B	60	95,52	65	35	94,25	-	21	27
22003-052512	AT5	25	A	12	19,01	10	6	17,85	23	30	36
22003-052514	AT5	25	A	14	22,29	13	8	21,05	25	30	36
22003-052515	AT5	25	A	15	23,88	16	10	22,65	28	30	36
22003-052516	AT5	25	A	16	25,47	18	11	24,2	32	30	36
22003-052518	AT5	25	A	18	28,65	20	12	27,4	32	30	36
22003-052519	AT5	25	A	19	30,25	22	12	29	36	30	36
22003-052520	AT5	25	A	20	31,83	23	14	30,6	36	30	36
22003-052522	AT5	25	A	22	35,12	24	15	33,85	38	30	36
22003-052524	AT5	25	A	24	38,21	26	15	37	42	30	36
22003-052525	AT5	25	A	25	39,8	26	15	38,6	44	30	36
22003-052526	AT5	25	A	26	41,47	26	16	40,2	44	30	36
22003-052527	AT5	25	A	27	42,98	30	18	41,8	48	30	36
22003-052528	AT5	25	A	28	44,62	32	18	43,35	48	30	36
22003-052530	AT5	25	A	30	47,76	34	18	46,55	51	30	36
22003-052532	AT5	25	A	32	50,94	36	22	49,7	54	30	36
22003-052536	AT5	25	A	36	57,31	38	22	56,05	63	30	36
22003-052542	AT5	25	A	42	66,87	40	24	65,6	71	30	36
22003-052544	AT5	25	B	44	70,07	45	26	68,8	-	30	36
22003-052548	AT5	25	B	48	76,42	50	28	75,15	-	30	36
22003-052560	AT5	25	B	60	95,52	65	35	94,25	-	30	36
22003-101615	AT10	16	A	15	47,75	32	18	45,9	51	21	31
22003-101616	AT10	16	A	16	50,93	35	20	49,05	54	21	31
22003-101618	AT10	16	A	18	57,29	40	22	55,45	60	21	31
22003-101619	AT10	16	A	19	60,48	44	22	58,6	66	21	31
22003-101620	AT10	16	A	20	63,66	46	24	61,8	66	21	31
22003-101622	AT10	16	A	22	70,03	52	28	68,15	75	21	31
22003-101624	AT10	16	A	24	76,39	58	30	74,55	83	21	31
22003-101625	AT10	16	A	25	79,58	60	30	77,7	83	21	31
22003-101626	AT10	16	A	26	82,76	60	30	80,9	87	21	31
22003-101627	AT10	16	A	27	85,95	60	30	84,1	91	21	31
22003-101628	AT10	16	A	28	89,13	60	30	87,25	93	21	31
22003-101630	AT10	16	A	30	95,49	60	30	93,65	97	21	31
22003-101632	AT10	16	A	32	101,86	65	32	100	106	21	31
22003-101636	AT10	16	A	36	114,59	70	35	112,75	119	21	31
22003-101640	AT10	16	A	40	127,32	80	40	125,45	131	21	31
22003-101644	AT10	16	B	44	140,06	88	46	138,2	-	21	31
22003-101648	AT10	16	B	48	152,78	95	48	150,95	-	21	31
22003-101660	AT10	16	B	60	190,98	110	60	189,1	-	21	31
22003-102515	AT10	25	A	15	47,75	32	18	45,9	51	30	40
22003-102516	AT10	25	A	16	50,93	35	20	49,05	54	30	40
22003-102518	AT10	25	A	18	57,29	40	22	55,45	60	30	40

Overview of items

Order No.	Profile	belt width	Form	No. of teeth	D	D1	D2 max.	D3	D4	B	L
22003-102519	AT10	25	A	19	60,48	44	22	58,6	66	30	40
22003-102520	AT10	25	A	20	63,66	46	24	61,8	66	30	40
22003-102522	AT10	25	A	22	70,03	52	28	68,15	75	30	40
22003-102524	AT10	25	A	24	76,39	58	30	74,55	83	30	40
22003-102525	AT10	25	A	25	79,58	60	30	77,7	83	30	40
22003-102526	AT10	25	A	26	82,76	60	30	80,9	87	30	40
22003-102527	AT10	25	A	27	85,95	60	30	84,1	91	30	40
22003-102528	AT10	25	A	28	89,13	60	30	87,25	93	30	40
22003-102530	AT10	25	A	30	95,49	60	30	93,65	97	30	40
22003-102532	AT10	25	A	32	101,86	65	32	100	106	30	40
22003-102536	AT10	25	A	36	114,59	70	35	112,75	119	30	40
22003-102540	AT10	25	A	40	127,32	80	40	125,45	131	30	40
22003-102544	AT10	25	B	44	140,06	88	46	138,2	-	30	40
22003-102548	AT10	25	B	48	152,78	95	48	150,95	-	30	40
22003-102560	AT10	25	B	60	190,98	110	60	189,1	-	30	40
22003-103218	AT10	32	A	18	57,29	40	22	55,45	60	37	47
22003-103219	AT10	32	A	19	60,48	44	22	58,6	66	37	47
22003-103220	AT10	32	A	20	63,66	46	24	61,8	66	37	47
22003-103222	AT10	32	A	22	70,03	52	28	68,15	75	37	47
22003-103224	AT10	32	A	24	76,39	58	30	74,55	83	37	47
22003-103225	AT10	32	A	25	79,58	60	30	77,7	83	37	47
22003-103226	AT10	32	A	26	82,76	60	30	80,9	87	37	47
22003-103227	AT10	32	A	27	85,95	60	30	84,1	91	37	47
22003-103228	AT10	32	A	28	89,13	60	30	87,25	93	37	47
22003-103230	AT10	32	A	30	95,49	60	30	93,65	97	37	47
22003-103232	AT10	32	A	32	101,86	65	32	100	106	37	47
22003-103236	AT10	32	A	36	114,59	70	35	112,75	119	37	47
22003-103240	AT10	32	A	40	127,32	80	40	125,45	131	37	47
22003-103244	AT10	32	B	44	140,06	88	46	138,2	-	37	47
22003-103248	AT10	32	B	48	152,78	95	48	150,95	-	37	47
22003-103260	AT10	32	B	60	190,98	110	60	189,1	-	37	47