

## Item description/product images



## Description

**Material:**

Housing, steel.  
Magnetic core AlNiCo.

**Version:**

Electro zinc-plated.

**Note:**

Deep pot magnets with smooth pin, shielded system.  
The magnets can be shortened by the dimension "H1" with no loss of magnetic force.

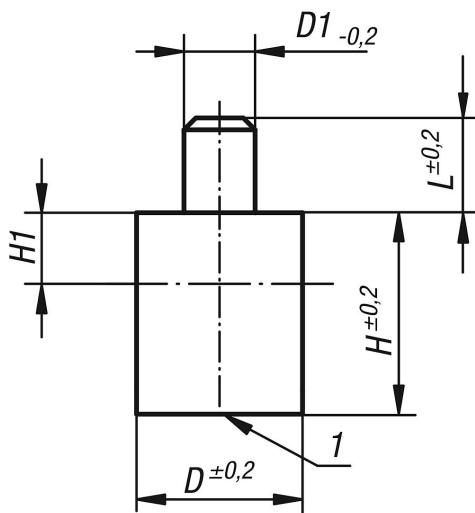
**Temperature range:**

max. 450°C.

**Drawing reference:**

1) magnetic face

## Drawings



## Overview of items

Order No.	D	D1	L	H	H1	Magnetic force N
09063-01	6	3	8	20	2	1,7
09063-02	8	3	8	20	3	4
09063-03	10	4	8	20	6	8,5
09063-04	13	4	8	20	7	12
09063-05	16	5	8	20	5	20
09063-06	20	6	8	25	6	50
09063-07	25	8	10	35	5	115
09063-08	32	10	10	40	3	200
09063-09	40	15	20	50	5	240
09063-10	50	18	25	60	2	420

