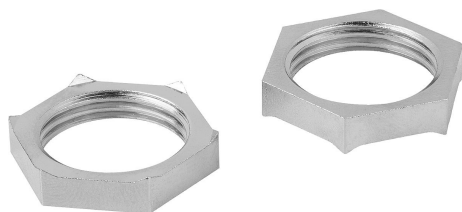


Item description/product images



Description

Material:

Brass.

Version:

nickel-plated.

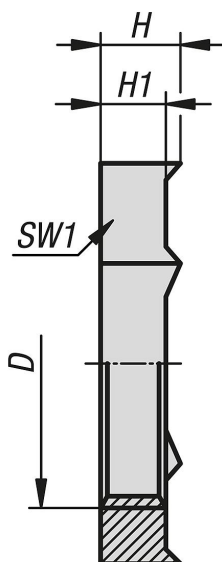
Note:

DIN EN 60423 hex nuts with metric thread. For securing EMC cable glands and accessories. With knife edge for cutting through paint or powder coatings to ensure optimum contact with the potential equaliser.

Temperature range:

-60°C to +200°C.

Drawings



Overview of items

Order No.	D	H	H1	SW1	Max. tightening torque on SW1 Nm
84100-32-11215	M12X1,5	3,5	2,8	15	3,5
84100-32-11615	M16x1,5	3,5	2,8	19	3,5
84100-32-12015	M20X1,5	3,7	3	24	3,5
84100-32-12515	M25x1,5	4,2	3,5	30	6,7
84100-32-13215	M32x1,5	4,7	4	36	12
84100-32-14015	M40X1,5	5,7	5	46	13,5