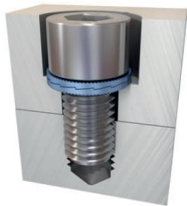


# Mounting examples for DIN 25201 wedge lock washers



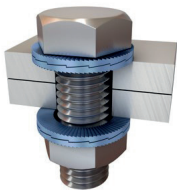
## Tapped holes

Wedge lock washers secure the screw against the seating face.



## Counterbores

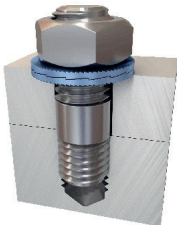
The OD of the standard wedge lock washers has been developed to suit DIN 974. The washers fit under the head of standard screws.



## Through holes

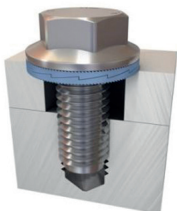
Two pairs of wedge lock washers are needed for drilled through holes – one pair secures the screw head and the other pair secures the nut.

To prevent additional settling, the nuts and bolts should be mounted so that the wedge faces of the lock washer pairs interlock completely.



## Studs

The nut is secured without the need to glue the stud.



Elongated holes



Soft surfaces

## Applications with elongated holes/soft surfaces

To optimise the surface pressure on elongated holes or soft materials e.g. aluminium, the use of retaining washers with a larger seating face in combination with a flange nut/screw is recommended.



## Applications where the wedge lock washer principle does not work

- Non-fixed surfaces (see image on left)
- Surface hardness greater than washer hardness
- Very soft surfaces such as wood or plastic
- Applications with extremely high setting behaviour