

Item description/product images



Description

Material:

Guide tube low carbon steel 1.7139.

Version:

case-hardened.

Note:

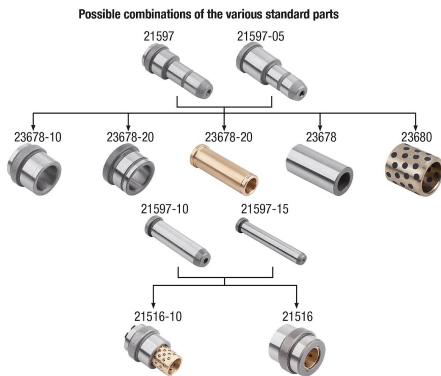
The steel guide tubes are used for precise guiding and positioning of components in demanding manufacturing processes. The guide tubes can be used in tool and die making applications to increase the accuracy, repeatability and efficiency of manufacturing processes.

The guide tubes are widely used in various areas of tool and die making, including:

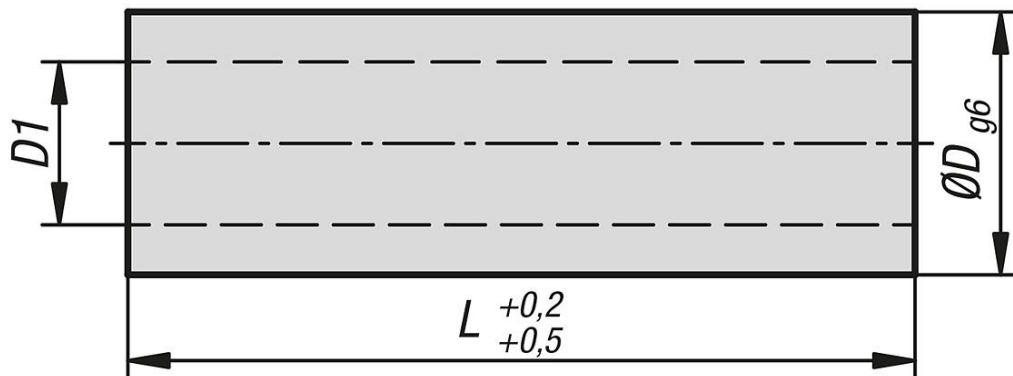
- Injection moulding
- Stamping and forming processes
- Precision machining
- Plastic processing
- Metal processing
- Automobile industry
- Electronics industry

Accessory:

Washers steel for guide tubes 07375-12.



Drawings



Overview of items

Order No.	D	D1	L
23678-10020	10	6,2	20
23678-10030	10	6,2	30
23678-10040	10	6,2	40
23678-10050	10	6,2	50
23678-10060	10	6,2	60
23678-10070	10	6,2	70
23678-10080	10	6,2	80
23678-10100	10	6,2	100
23678-10120	10	6,2	120
23678-10140	10	6,2	140

Overview of items

Order No.	D	D1	L
23678-14030	14	8,5	30
23678-14040	14	8,5	40
23678-14050	14	8,5	50
23678-14060	14	8,5	60
23678-14070	14	8,5	70
23678-14080	14	8,5	80
23678-14100	14	8,5	100
23678-14120	14	8,5	120
23678-14140	14	8,5	140
23678-14160	14	8,5	160
23678-14180	14	8,5	180
23678-18040	18	10,5	40
23678-18060	18	10,5	60
23678-18080	18	10,5	80
23678-18100	18	10,5	100
23678-18120	18	10,5	120
23678-18140	18	10,5	140
23678-18160	18	10,5	160
23678-18180	18	10,5	180
23678-18200	18	10,5	200
23678-18220	18	10,5	220
23678-18240	18	10,5	240
23678-24060	24	13	60
23678-24080	24	13	80
23678-24100	24	13	100
23678-24120	24	13	120
23678-24140	24	13	140
23678-24160	24	13	160
23678-24180	24	13	180
23678-24200	24	13	200
23678-24240	24	13	240
23678-30080	30	17	80
23678-30100	30	17	100
23678-30120	30	17	120
23678-30140	30	17	140
23678-30160	30	17	160
23678-30180	30	17	180
23678-30200	30	17	200
23678-30220	30	17	220
23678-30240	30	17	240
23678-30260	30	17	260
23678-30280	30	17	280
23678-30300	30	17	300